



Invito House Bramley Crescent Ilford, IG2 6NU

Edward Chase are pleased to present this excellent one bedroom apartment within the highly sought after development of Invito House, IG2. The property consists of a large double bedroom, spacious reception, open plan kitchen and storage cupboards. The apartment sits on the doorstep of Gants Hill station (Central Line) as well conveniently positioned next to the A12 and Gants Hill roundabout providing excellent road and rail links to Central London as well as surrounding areas. The Gants Hill area is known for having an abundance of amenities as well being a hub for many highly rated restaurants. Call Edward Chase now to attend the next available viewing. Property key features; - One bedroom apartment - Excellent condition - Large reception - Open plan kitchen - Integrated white goods - Gas central heating - Double glazed windows - High EPC rating - Storage cupboard - Video entry system - Secure parking available - Gants Hill tube (Central Line – 24

- A Large One Bedroom Amazing Apartment In Invito House, Gants Hill
- Located On The Doorstep Of Gants Hill Station Reducing Your Commuting Time To Central London
- Excellent Road Links To East London And Surrounding Areas Being Located On The A12,
- Large Reception Area With An Open Plan Kitchen Area Providing Yourself With Ample Living Space
- An Abundance Of Natural Light As You Walk Through
- Property Comes Furnished With Ample Storage Throughout

Monthly Rental Of £1,174

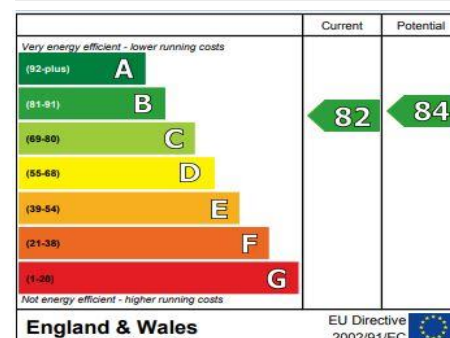
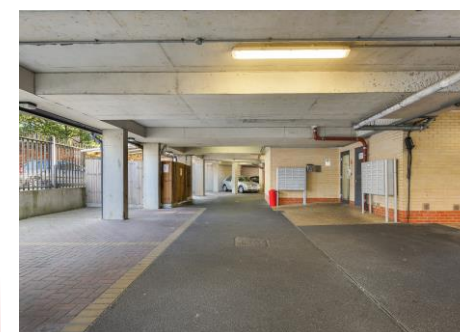
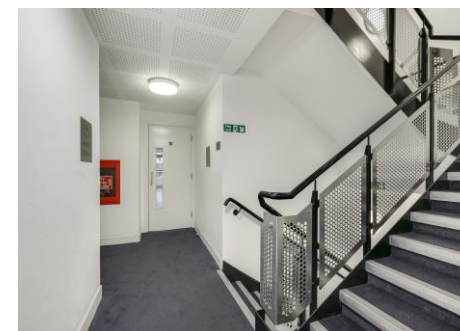
Invito House Bramley Crescent

Iford, IG2 6NU

Monthly Rental Of £1,174

Edward Chase are pleased to present this excellent one bedroom apartment within the highly sought after development of Invito House, IG2. The property consists of a large double bedroom, spacious reception, open plan kitchen and storage cupboards. The apartment sits on the doorstep of Gants Hill station (Central Line) as well conveniently positioned next to the A12 and Gants Hill roundabout providing excellent road and rail links to Central London as well as surrounding areas. The Gants Hill area is known for having an abundance of amenities as well being a hub for many highly rated restaurants. Call Edward Chase now to attend the next available viewing. Property key features; - One bedroom apartment - Excellent condition - Large reception - Open plan kitchen - Integrated white goods - Gas central heating - Double glazed windows - High EPC rating - Storage cupboard - Video entry system - Secure parking available - Gants Hill tube (Central Line – 24 hours on the weekend) - Surrounded by great

local amenities - Valentines Park short walk away Call Edward Chase now to attend the next available viewing. Edward Chase estate agents offer a bespoke, professional, ARLA accredited Lettings & Management service. If you would like a free appraisal to gauge the rental potential of your property or you are considering a buy to let purchase, please feel free to contact Sukhbir Basra, Branch Manager to arrange an appointment.



MONEY LAUNDERING REGULATIONS 2003

Intending purchasers will be asked to produce identification and proof of financial status when an offer is received. We would ask for your co-operation in order that there will be no delay in agreeing the sale.